

Chief Francis Kariuki, The Tweeting Chief



How I hope to achieve the
Global Goals
in my location



Open Institute

URGENT MESSAGE

HELP! THE WATER IS POISONED!



URGENT MESSAGE

COME SAVE THE KIDS!



URGENT MESSAGE

HELP! FIRE!



URGENT MESSAGE

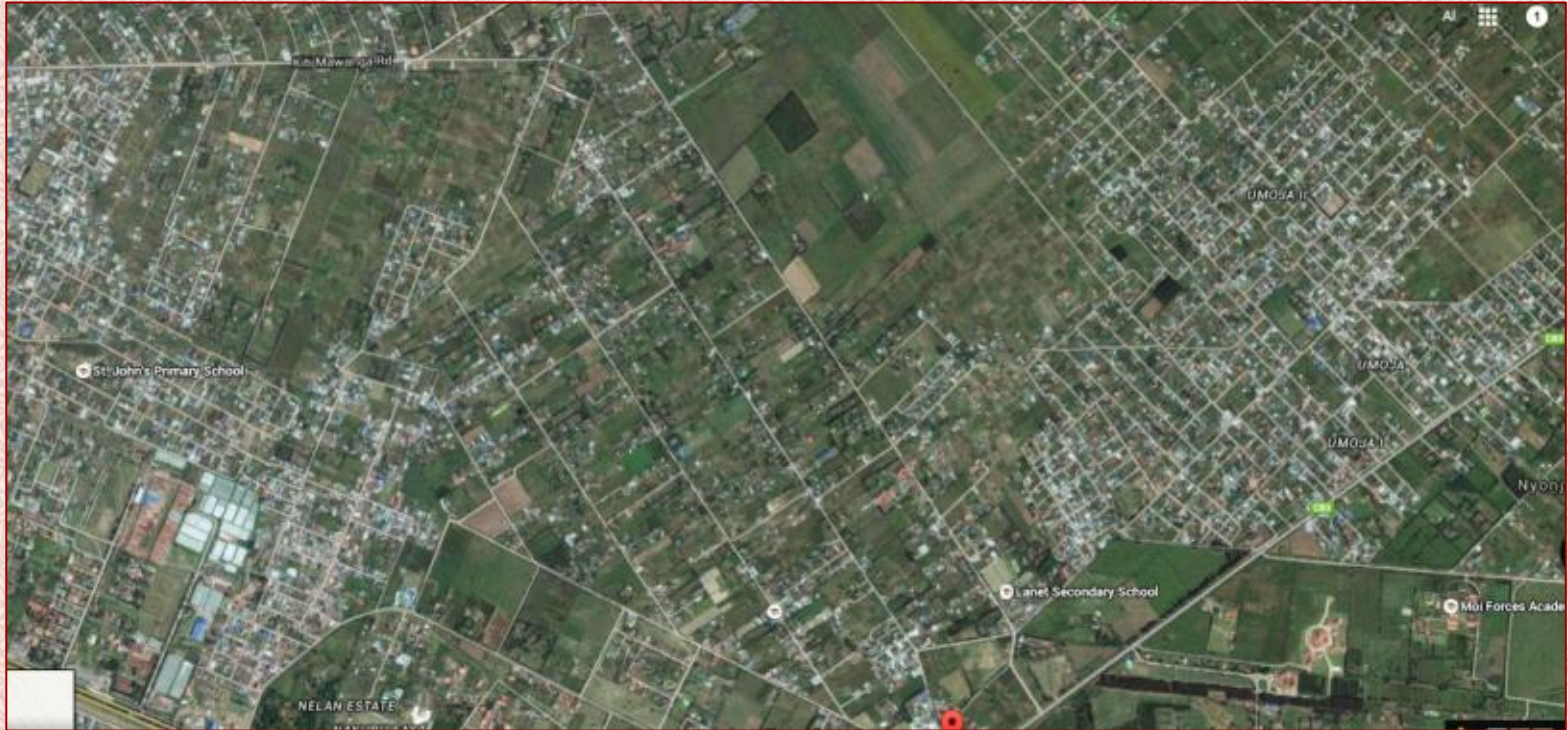
HELP! I FELL INTO A PIT!



URGENT MESSAGE

HELP! MY COWS HAVE BEEN STOLEN





Lanet Umoja Location, Dundori Division, Nakuru County

12,500 households, 50,000 people (According to our data)

SDGs & Nyumba Kumi

- Same Issues
- Same goals
 - Security
 - Health
 - Educations
 - Livelihoods
 - **Gender issues**





Trained 300 Community Leaders,
elected by approx 25 households each

1 NO
POVERTY



2 ZERO
HUNGER



3 GOOD HEALTH
AND WELL-BEING



4 QUALITY
EDUCATION



5 GENDER
EQUALITY



6 CLEAN WATER
AND SANITATION



7 AFFORDABLE AND
CLEAN ENERGY



8 DECENT WORK AND
ECONOMIC GROWTH



9 INDUSTRY, INNOVATION
AND INFRASTRUCTURE



10 REDUCED
INEQUALITIES



11 SUSTAINABLE CITIES
AND COMMUNITIES



12 RESPONSIBLE
CONSUMPTION
AND PRODUCTION



13 CLIMATE
ACTION



14 LIFE
BELOW WATER



15 LIFE
ON LAND



16 PEACE, JUSTICE
AND STRONG
INSTITUTIONS



17 PARTNERSHIPS
FOR THE GOALS



**SUSTAINABLE
DEVELOPMENT
GOALS**

LANET UMOJA'S CHOSEN SDGs

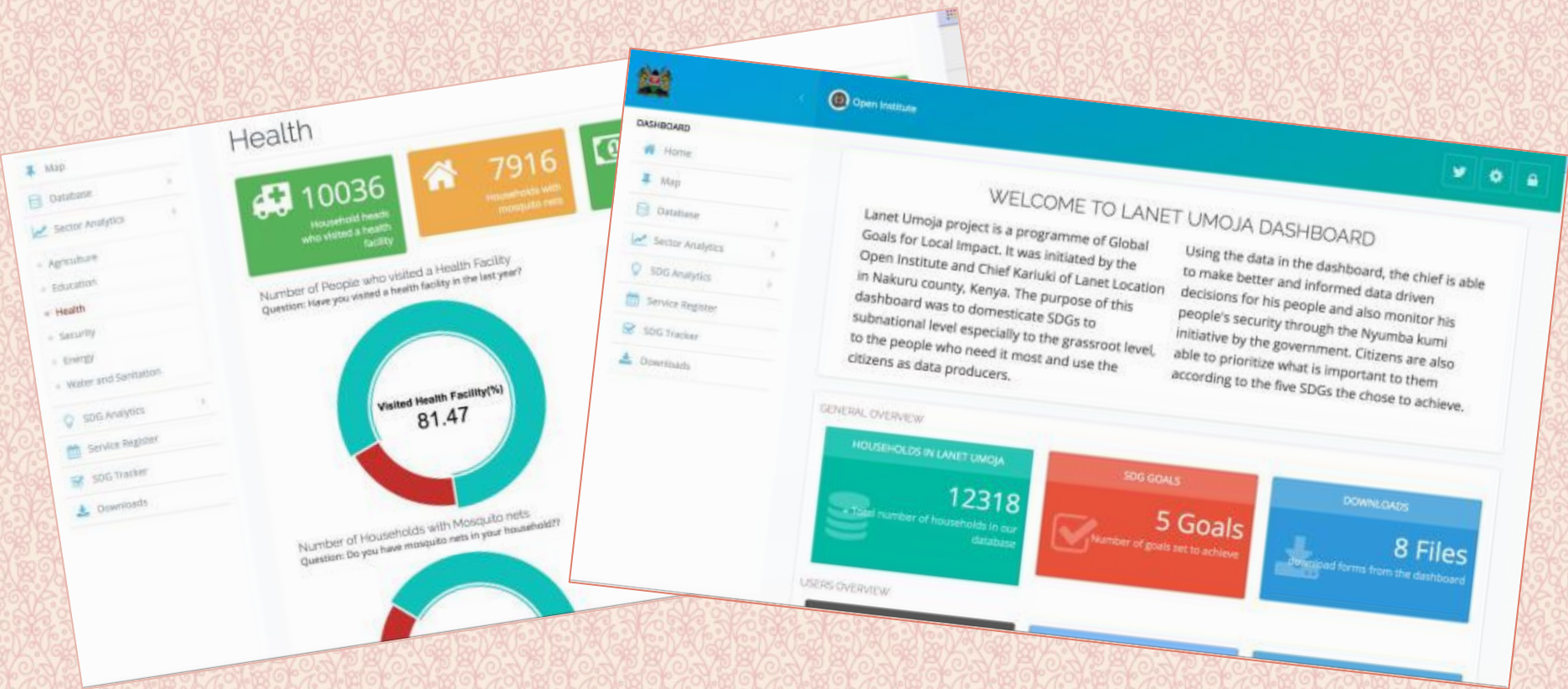


What is the value?

1. Enable Chief to **achieve the Nyumba Kumi Goals** (Security/Know your neighbour)
2. **Micro-targeting solutions** by household to strengthen equitable development (Gov/Donors/ CSOs)
3. **Build Community confidence** in their capacity to contribute and control their own development narrative (“What can we solve for ourselves?”)
4. **Reduce wastage of resources** by ensuring they are used in specific places
5. **Enhance monitoring** of the Sustainable Development Goals implementation **ACCURATELY**



Community Leaders Collecting Data



MY DASHBOARD

<http://lanet.opencountry.org>

GENDER



- We trained women on data and what it means to them
- Women agreed that men also have a role to play so **30% of the Lanet gender committee are men.**

GENDER

SDG 5: Gender Equality

Sub-location

Cluster

Age

Profession

Gender

Highest Education Level

Employment Status

1. Are You A Member Of Any Group?

A. If Yes, How Many Groups?

B(1). What Is The Name Of Group 1?

- Data was collected by mobile phone by over 2000 women on all gender issues
 - Violence against women
 - Leadership
 - Value of unpaid domestic work
 - Etc
 -

LANET UMOJA HOUSEHOLD DATA STORY

37.12%
of the households stated
having both parents

Total Population:
12,000 household
50,000 people

59.12%
fathers are
breadwinners
39.69%
mothers are
breadwinners

mothers only:
32.15%
fathers only:
21.91%.

Those led by
brothers, daughters,
guardians, and
sisters were all at
5.56%

44.44% were led by grandfathers,
33.33% were led by grandmothers

Global Goals for Local Impact Project,
Open Institute, 5050 work supported by
Olivier Sauter.

LANET UMOJA HEALTH DATA STORY



Malaria affects more
people in Lanet Umoja
location at the beginning
of the year and at the
end of the year

TB affects more
people in Lanet
Umoja location
in October.

There are no
health centres in
Lanet Umoja



54.64% of households in
Lanet Umoja location
have mosquito nets fitted
in their households

17.86% of the
breadwinners
stated that they
had contracted
Malaria

About half of all households that
reported having cases of malaria
also reported not having mosqui-
to nets fitted in the homes

LANET UMOJA WATER & SANITATION DATA STORY

Almost every household
has clean drinking
water

Sources of water

6.05%
use water delivered
by cart or lorries

66.01%
use piped water

6.89%
use
community
water

70.1%
use rain
water

Most households (74.02%) in
Lanet Umoja use pit
latrines, 16.53% use both WHO
and pit latrines while 14.53%

34% of the
households in
Lanet share

LANET UMOJA EDUCATION DATA STORY



Kiamunyeke has
the highest
number of
children in ECD
followed by
Umoja then
Murunyu

3,174 children in ECD

23%
of children have
access to school
feeding programme

19.95%
have access to a
Library at school

32%
go to school with
permanent built

31%
have access

LANET UMOJA GENDER DATA STORY

Global Goals for Local Impact Project,
Open Institute, 5050 work supported by
Olivier Sauter.

19.02%
have attended college
and university,
63.19% stopped at
secondary
school.



Only 17.3% of land owners
are female, **82.7%** are male

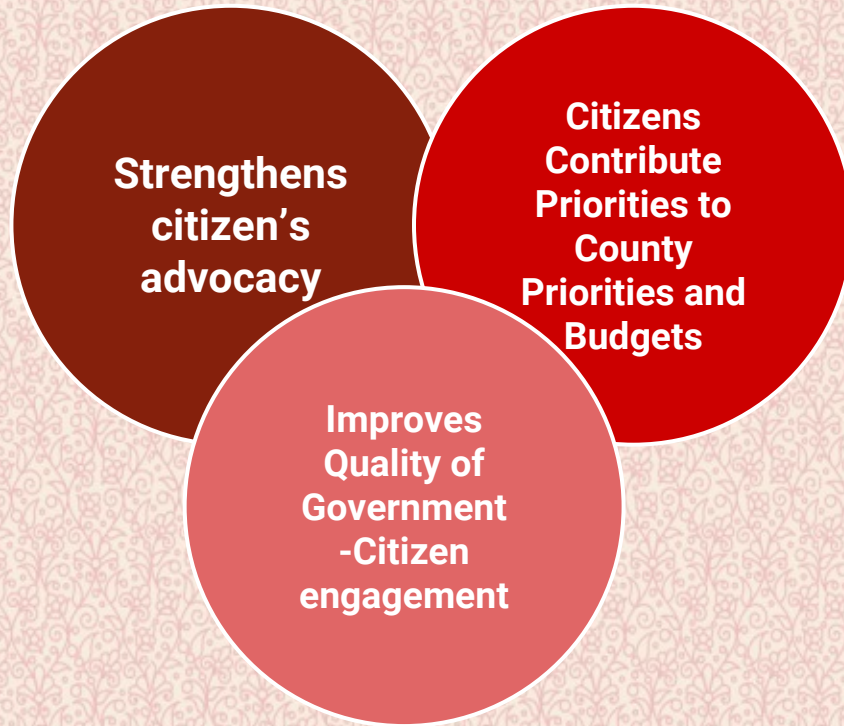
6.2% of the female respondents reported having being
physically abused, **1.21%** of reported having being sexually
abused, and **11.91%** reported having being psychologically
abused



75.54%
of women belong to at least one women's group group.
Most of the groups in Lanet Umoja are merry-go-round
chama groups. Investment groups are the least of the
gender related groups.

THE DATA

How does this contribute to National Processes



- Citizens define their priorities for themselves for their area
- Citizens are empowered to communicate these priorities into the County Planning and National Planning processes (they start in January)

Top Challenges

Technology

- Mobile phones (need more and better phones)

Social/Programmatic

- Skills uptake slower among (older) community leaders
- Need to strengthen participation of young people
- Statistical strength of the data collection efforts (partnership with Development Initiatives)

IMPACT

- We now KNOW how many people in our location – we thought 29,000 people, 7,500 households but **we have 12,000 households and 50,000+ people**
- No clean water in any home – water filters in every home (over 12000 households, 50,000 people!)
- We know what our problems are and what needs to be fixed
- Citizen participation is HIGH



Start with one Kenya Water Filters for every household.